

# FROM THE MOON TO THE UNIVERSE

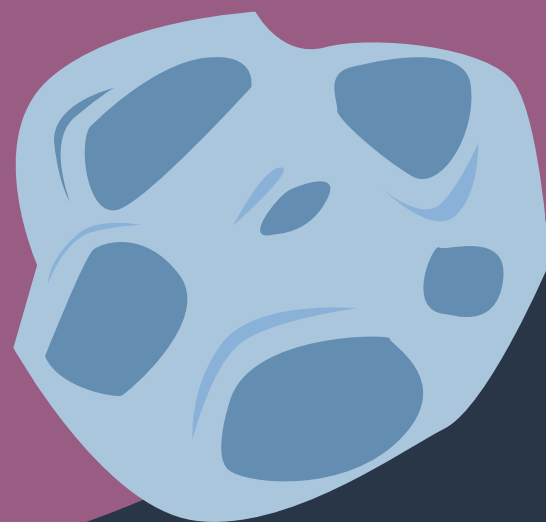
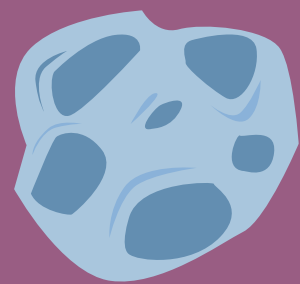


Sai Shreya Nuguri  
Xaviera Shedrick-Owens  
Yupei Duan

Group 3

# INSTRUCTION

The project combined Xaviera's "Moon's Message" project with Yupei's "A Mini Solar System" project, and uses Shreya's "Trivia Room" project as a connection.



A large, bright orange sun with a scalloped edge is in the upper left. Below it is a smaller, crescent-shaped orange moon. The background is a dark blue space with white stars and a light blue arc on the left.

# INSTRUCTIONAL DESIGN

- Our project educates learners about the Earth-moon relationship through an African saga, deepening their understanding of African culture, language, and the universe. It serves as a platform to explore human connections with the moon, Earth, and the universe.



# LEARNING OBJECTIVES

- After going through this learning environment:
    - students will be able to name the planets in order by the distance from the sun.
    - students will be able to sketch the structure of the solar system.
    - students will be more familiar with African origin stories.
- 
- students will be able to develop their own stories based on the African culture and the universe.





# COLLABORATIONS



# TEAM WORK

Topic: Group Project Design x G3: From the Moon to the L x Bluehost Portal x Posts < Welcome — WordP x Templates x Colorful Universe Playful Sp x

https://umsystem.instructure.com/groups/106580/discussion\_topics/1845878

Home  
Announcements  
Pages  
People  
Discussions  
Files  
Collaborations

This should open up a pop-up for you to save this object as a .dae file on your local computer.

Save As  
OneDrive • Desktop • Documents

Organization	Name	Date modified	Type	Size
OneDrive	ScreenShot-O-Matic	29-07-2018 15:23	File folder	
OneDrive	ShareFolder	01-10-2022 15:44	File folder	
OneDrive	Virtual Machines	09-08-2018 07:00	File folder	
OneDrive	Zoom	27-06-2020 09:40	File folder	
Desktop	ScreenShot	27-06-2022 17:04	DAE File	17 KB
Desktop	Screen	27-06-2022 17:02	DAE File	16 KB
This PC	1065878.dae	10-10-2022 21:10	DAE File	8 KB
This PC	1065878.dae	10-10-2022 21:06	DAE File	8 KB
OneDrive	1065878.dae	27-06-2022 17:02	DAE File	17 KB

Type here to search

6:02 PM  
10/11/2023

I can't import my creation!!



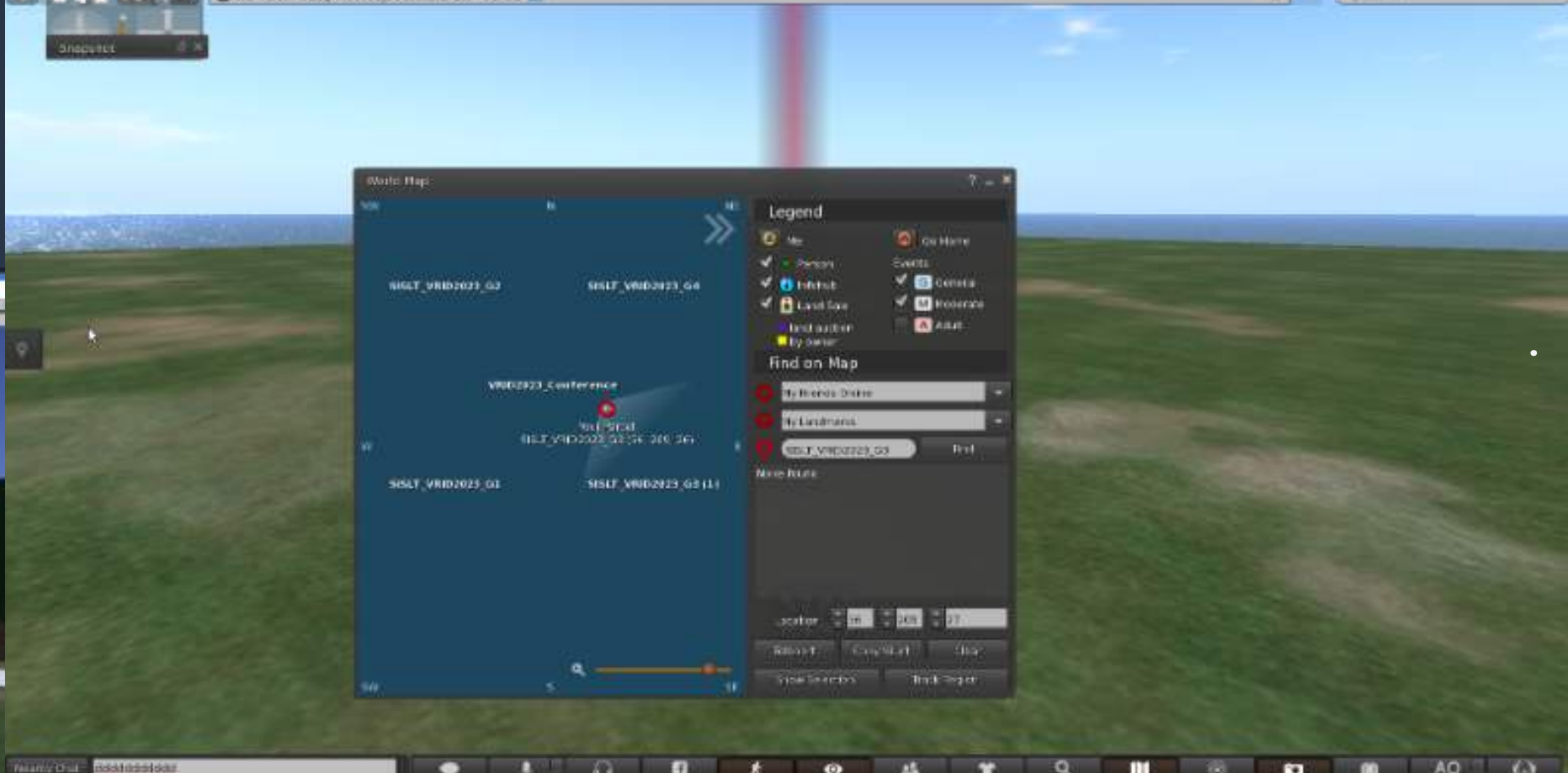




# “HAPPY” ACCIDENTS

There were some problems on the teleport function that some team members could not teleport from the main island (SISLT\_VRID2023) to islandSISLT\_VRID2023\_G3. The location of our team island was: 56,209:27, and one of the team members found the island in the northeast of the main island. So they chose to fly to the target island directly. During the process, they found more island on the world map and did some exploration.

# "HAPPY" ACCIDENTS





# VIDEO OF THE DAY

Watch Yupei and Shreya planning out the import of our island for the group



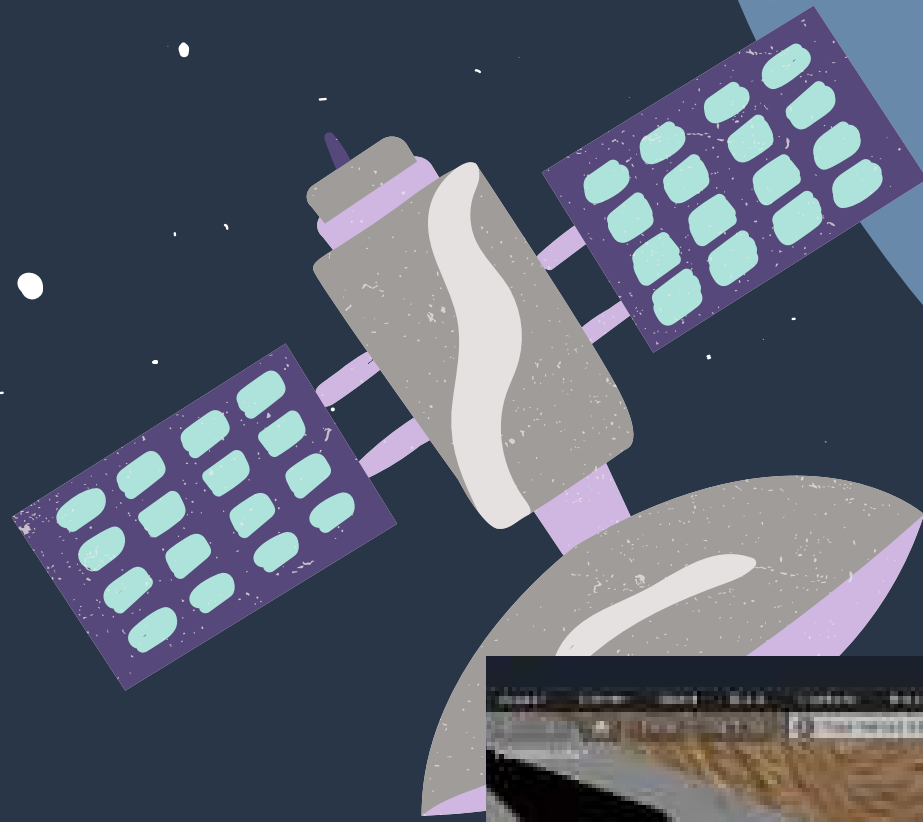
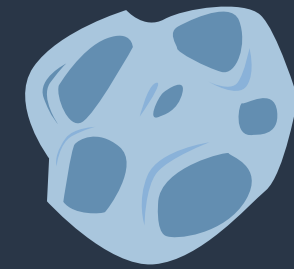
# WORLD VIEW

This is our view of our island in OpenSim.



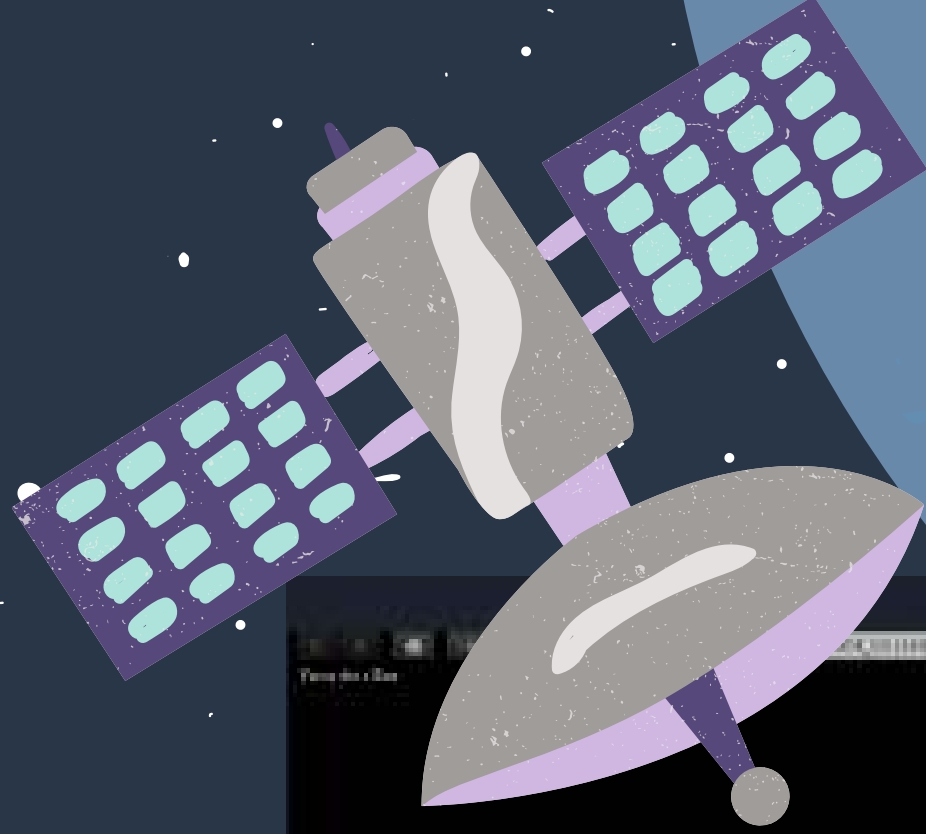
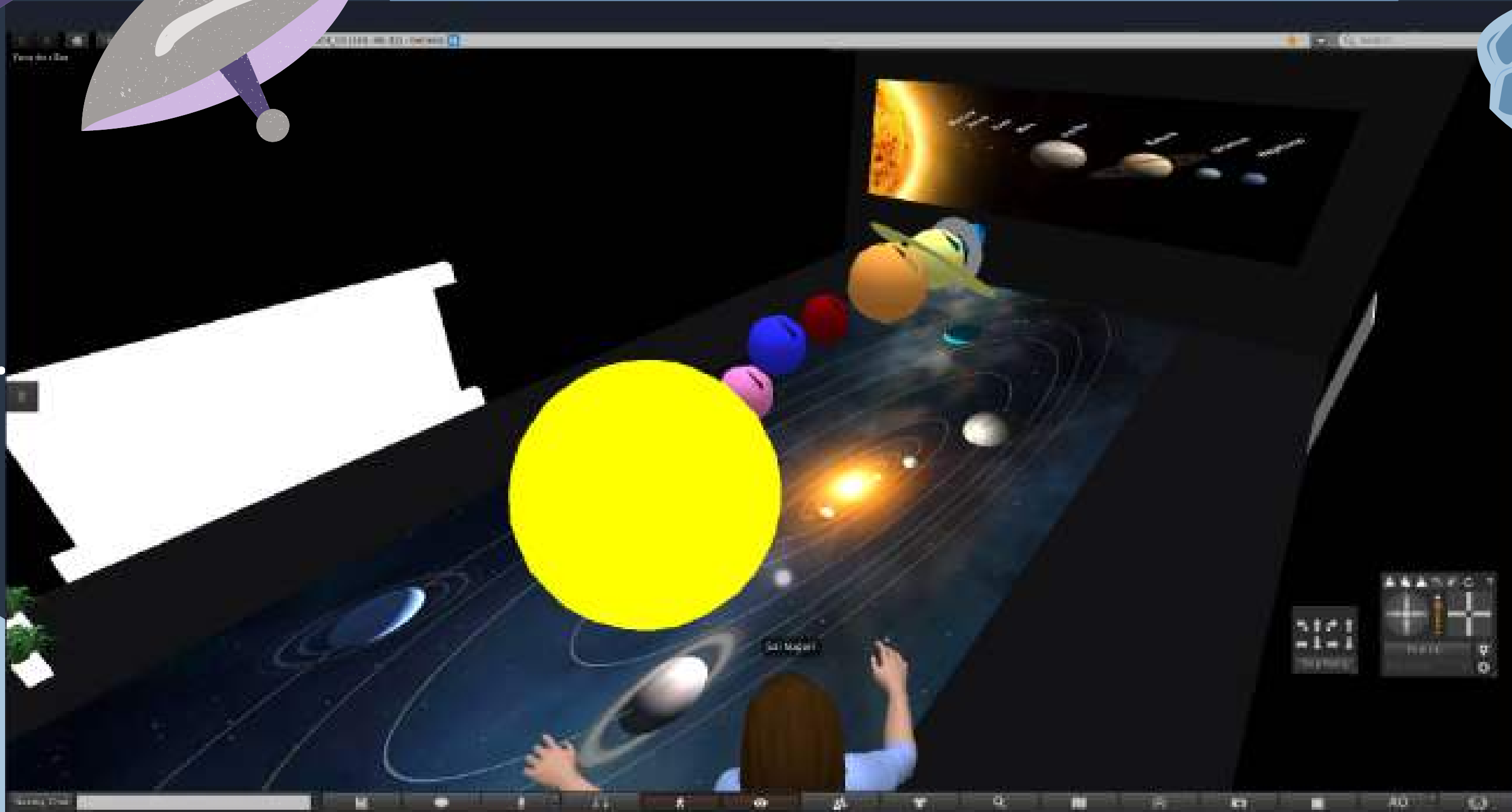
# LEARN ABOUT THE MOON'S MESSAGE

Explore a traditional South African folktale in both English and Khoe (an indigenous language).

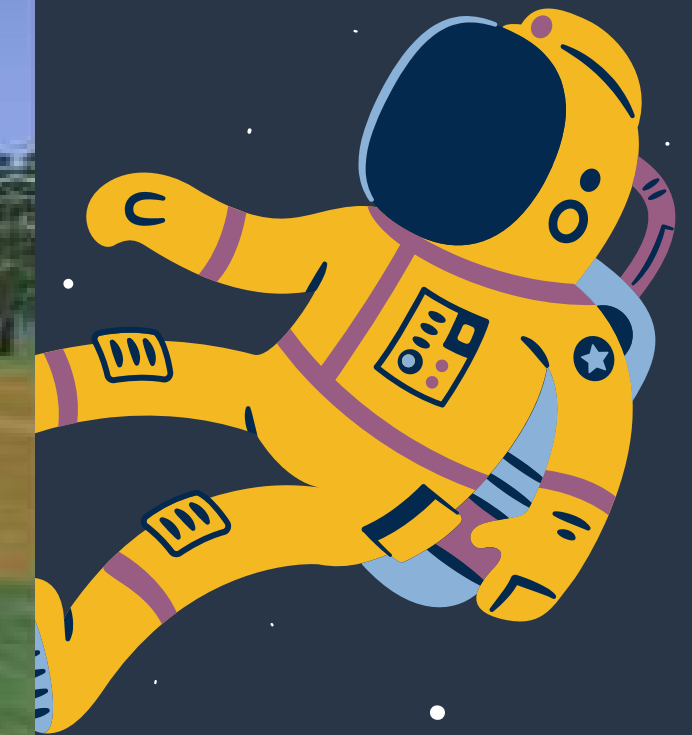




# EXPERIENCE THE SOLAR SYSTEM



# TEST YOUR SPACE KNOWLEDGE



# OUR EXPERIENCE USING OPENSIM

- New to the application so took a while to learn the more finer things
  - Wasn't user intuitive when it came to understanding or learning new aspects
- Love the real-time collaboration feature (Yes, especially the voice)
- Easy to duplicate and add new textures to objects
- Overall, a decent platform to create virtual learning spaces